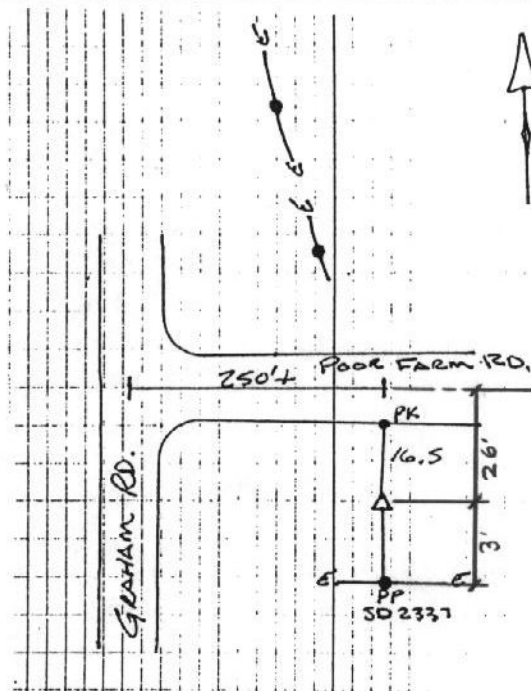


# CITY OF MURRAY CONTROL MONUMENT CARD

DESIGNATION: B3 GPS AZ  
TYPE: CONCRETE MONUMENT W/ CITY DISK  
DATE SET: JUNE 1997 QUAD: DEXTER, KY.  
HORIZONTAL DATUM: NAD-83 VERTICAL DATUM: NAVD-88  
STATE: KENTUCKY COUNTY: CALLOWAY ZONE: KY. S 1602

NORTHING: 1765062.96 FT  
EASTING: 877575.95 FT  
ELEVATION: 541.75 FT (GPS)  
LATITUDE: N 36°38'48.65295" LONGITUDE: W 088°21'01.75213"  
SCALE: CONVERGENCE:  
PLANE AZI. TO AZI. MARK:

To Reach: From the intersection of Graham Rd. and  
Poor Farm Rd., go east on Poor Farm Rd. about 250 ft.  
to the station on the right.



NOT TO SCALE



GRW Aerial Surveys, Inc.  
801 Corporate Dr. Lexington Ky. 40503  
(606)223-3999